

Hello Everyone! We are looking forward to hosting you and your teams Saturday, January 11 at Park Crossing High School. Enclosed you will find more information about schedules, concessions, and how/where to park, unload, and directions to the tournament. I will add additional information as I receive the pertinent information. Please let me know if you have any questions or concerns.

Severe Weather

There is a possibility of SEVERE/FREEZING weather in the forecast. We have discussed this, and have concluded that IF NECESSARY, we can postpone our event 2 hours if travelling teams face inclement road conditions.

Please notify me ASAP if this affects you so I can notify the other teams of the delay. Contact information at the end of this document.

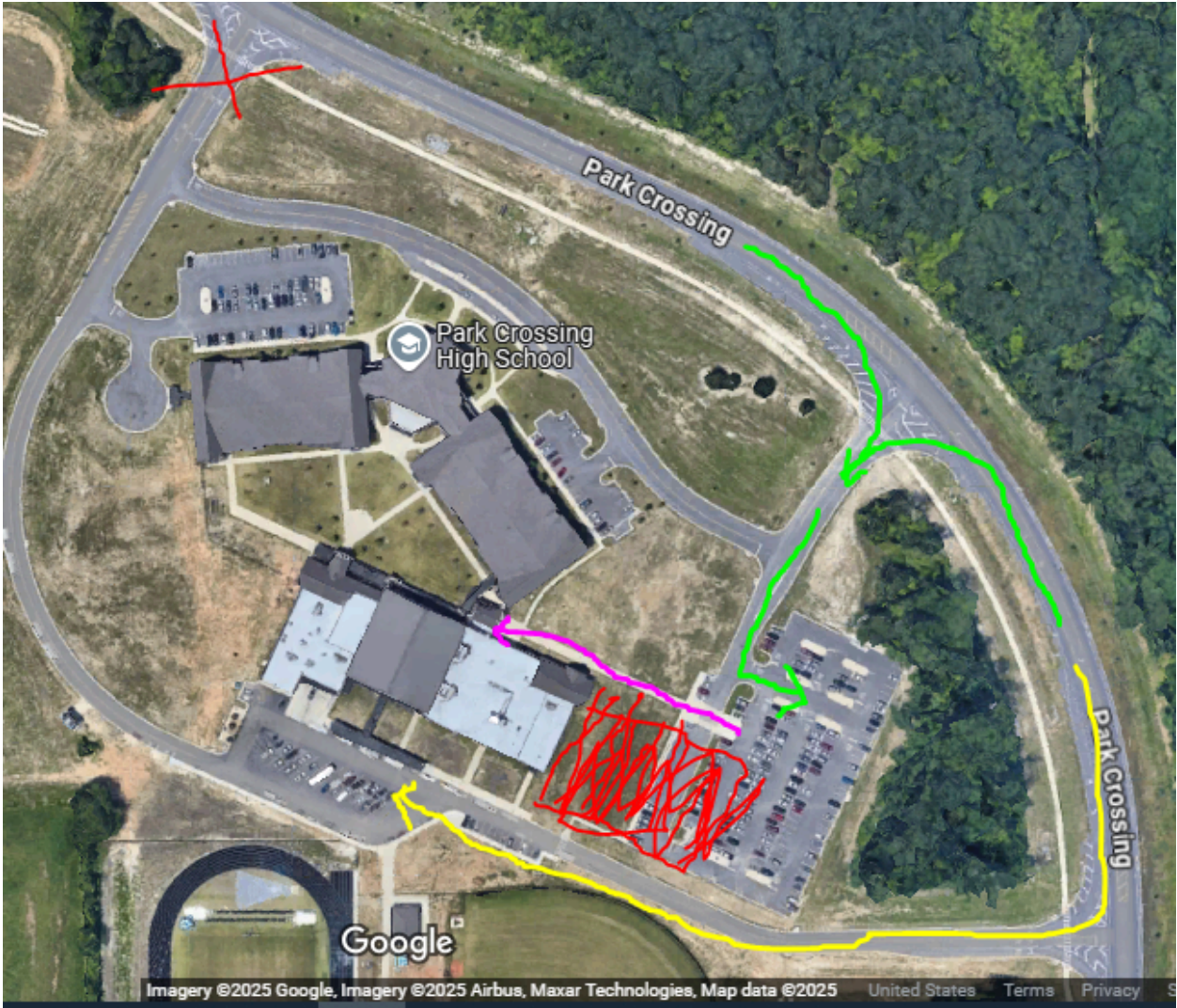
Map and Parking

The event is being held at the Park Crossing High School. The event will be held in the cafeteria, main gymnasium, mini gymnasium, and Gym Lobby. The rest of the facility is off limits. There will be signs labeled as well as volunteers to assist with knowing where to go once you get to the school. Buses will have to park in the back of the school. Cars will need to park in Student Parking. Please do not park in the back of the school as you may block the only bus parking available and the only point of entry will be the gym entrance, which is extremely inaccessible from the rear of the school. Our school is under construction, so access is extremely limited.

The official address is [8000 Park Crossing](#)

PARKING DIAGRAM BELOW

Cars, please follow the **Green Lines** to student parking
Once you are parked, follow the **Pink Lines** to the gym entrance.
Buses, please follow the **Yellow Lines** and park in the long, vertical bus spots at the rear of the gym. You can drop off and park easily.
The **RED AREA** between student parking and the gym entrance is an active construction zone. DO NOT ENTER or PASS THROUGH this area
Unless you are dropped off by a bus, the gym entrance is the recognized point of entry for the duration of the event. Please notify me if you are transporting students by bus for the event.



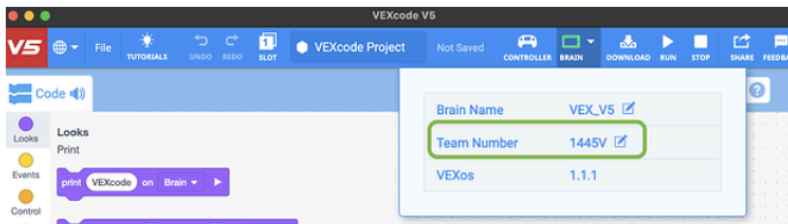
Field Control

There are no field controls for VEX IQ. However, our VRC competition fields will be using the V5 smart field control, so your students need to have their team numbers and letters (no spaces) set in their brain. This will be checked during inspection. The skills field will be using the VEXnet Field Controller. For more about Smart Field control [please see this document](#).

Initial Setup (Teams)

- Open VEXcode
- Connect robot brain directly to computer
- Turn on robot brain
- Ensure controller and robot are running the latest VEXos firmware (1.1.1 or later)
- Set team number on robot brain (no spaces between team number and letter)

If using a V5 Competition Field Controller, an EP should communicate the above mentioned steps to coaches prior to the event. These must be checked at inspection for proper connection to the control system at an event.



Doors Open/Basic Agenda

Please continue to check the event page for [IQ](#) and [VRC](#) as this site will update with any last-minute information.

Doors open/pits open at 7:30 am with check-in starting at 8:00 am.

All robots must be inspected and checked in by 8:45 am.

Driver meeting at 9:00 am.

Of course, as with any event, times are subject to change, however we will attempt to adhere closely to the event schedule

Concessions and Lunch

We will have concessions available, including pizza for lunch. There is a Google form for pizza pre-orders linked [here](#). Please have this completed by Friday at noon if possible. Concessions will include candy, chips, drinks, etc. and limited amounts of pizza when close to lunch. On site lunch pre-orders will be available until 9:30 Saturday morning. There are a number of restaurants located within 5-10 minutes of the school as well. Please do not attempt to deliver food to the school, our administration team does not endorse this, and getting food delivered is complicated at our campus due to access/construction/cell signal.

General Notes:

- Please remember to upload your consent forms on the Robotevents.com website
- Please arrive at or after 8:00 am for check-in and pits
- **If you have not already paid through Robotevents, please do that before arriving on Saturday morning.** Let me know if you are having issues.
- Skills field will close 45 minutes after lunch
- Lastly, remind your students, parents, and coaches of the REC's code of conduct. We will be enforcing those rules this weekend.
- STUDENT FIRST robotics is extremely important to us at PCHS

If you have any questions, concerns, or comments, please feel free to email me at [Travis Engram](#) or call/text at 205-531-2788.